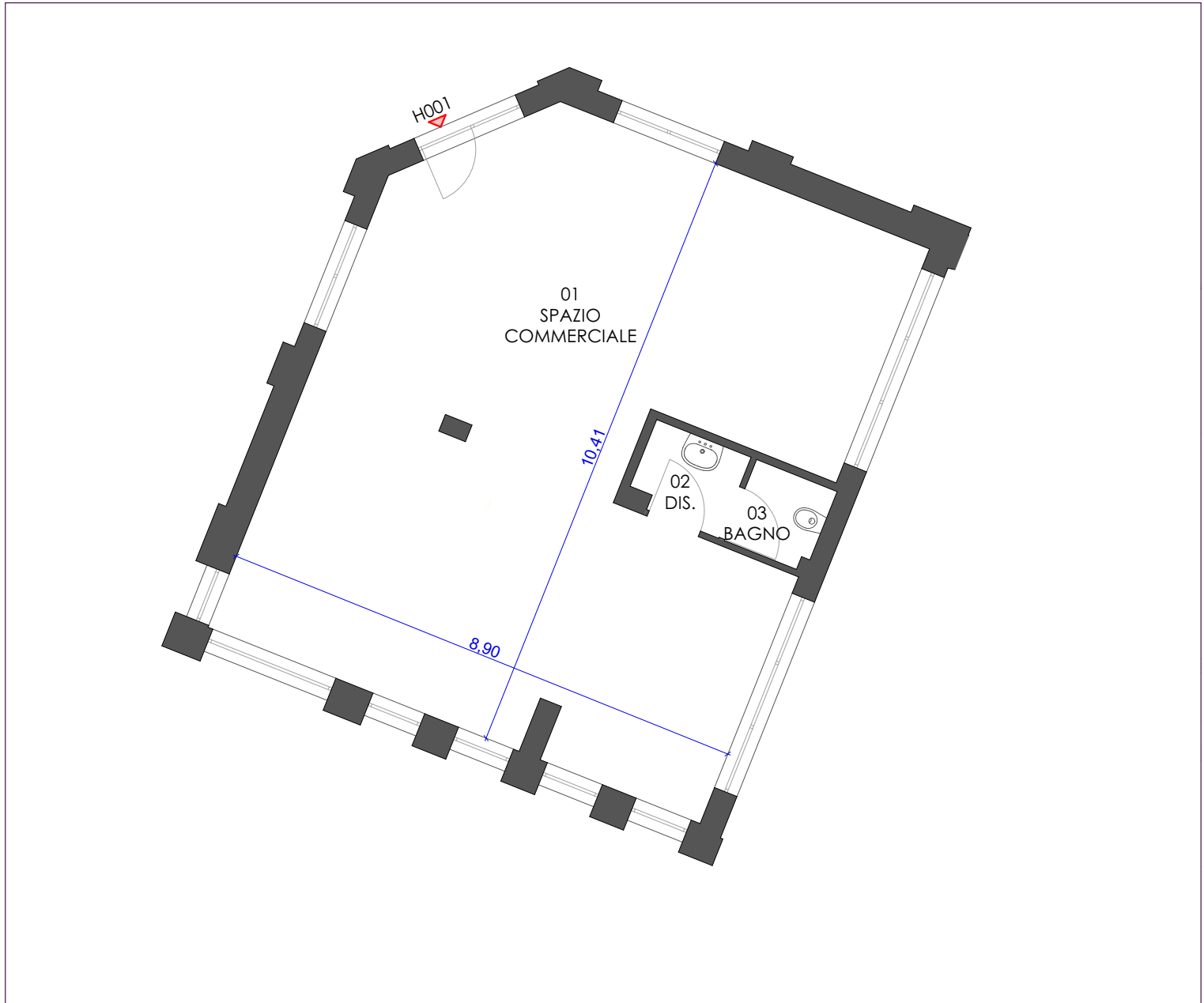


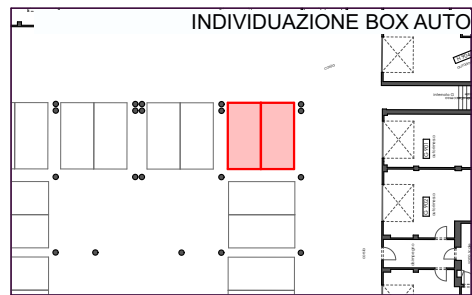
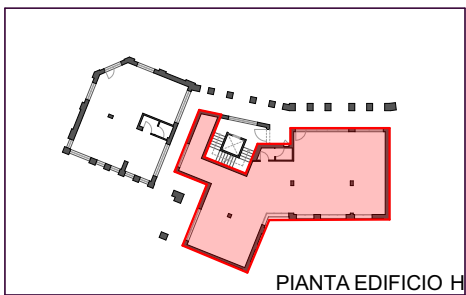
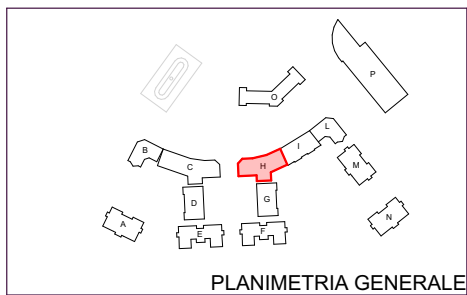
## PIANTA ALLOGGIO - PIANO TERRA



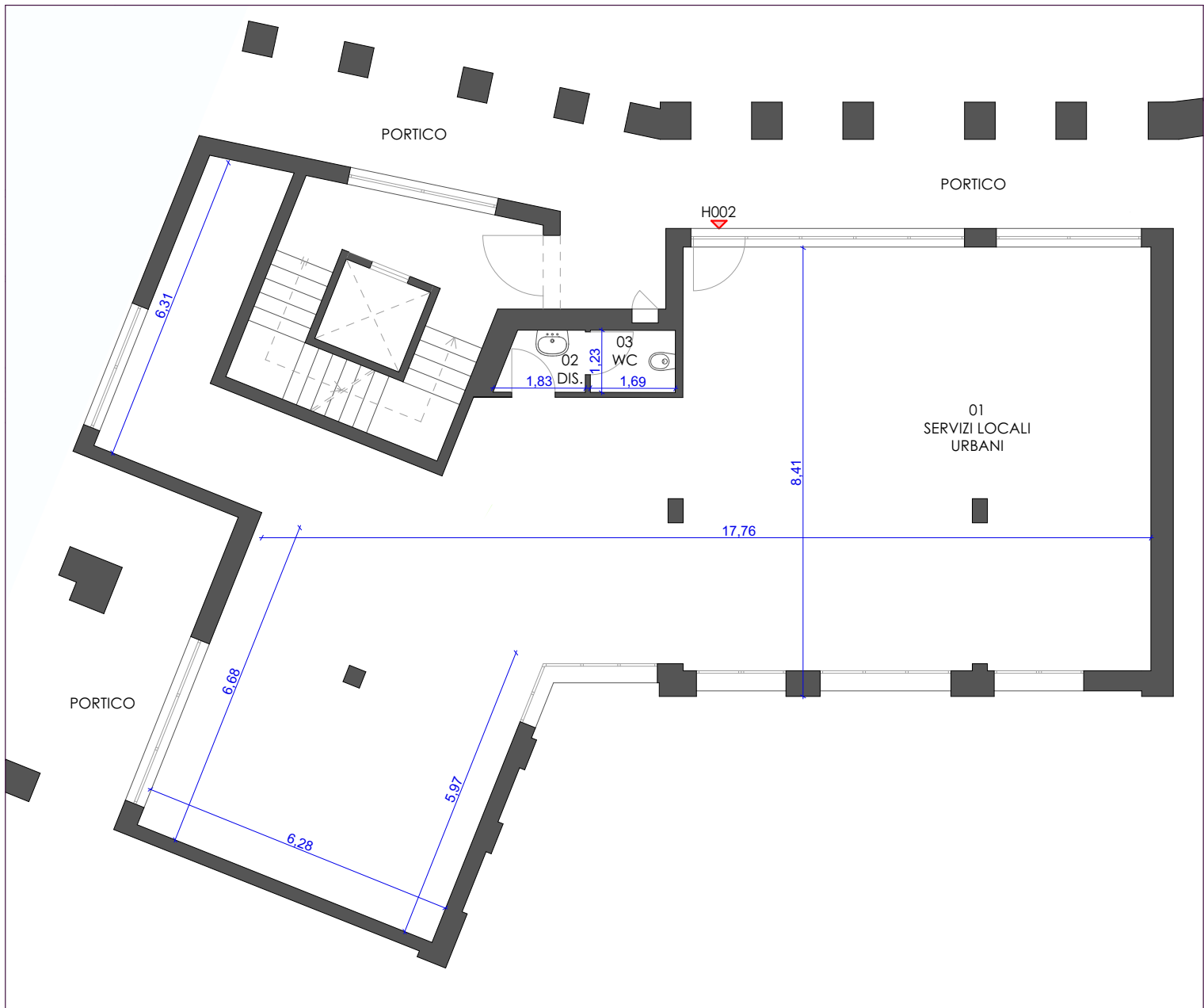
### SUPERFICI LORDE

SUP. UNITA'	MQ 106,24
SUP. BOX AUTO (H904)	MQ 41,05
SUP. PERTINENZE (Giardini, portici, terrazze, logge)	--

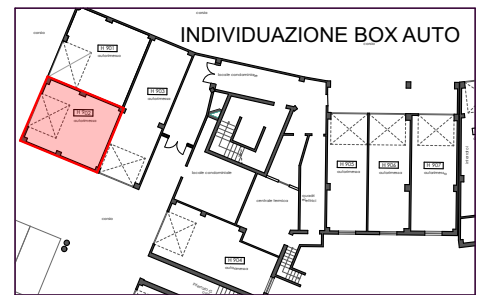
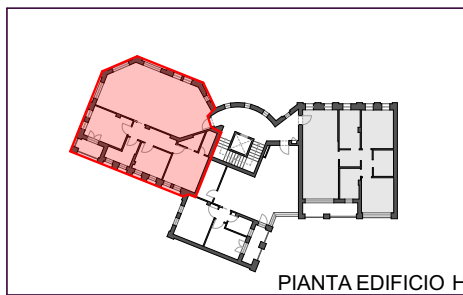
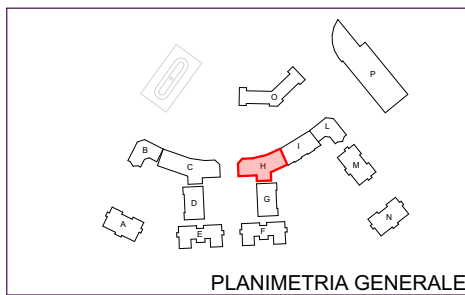
**TOTALE MQ 147,29**



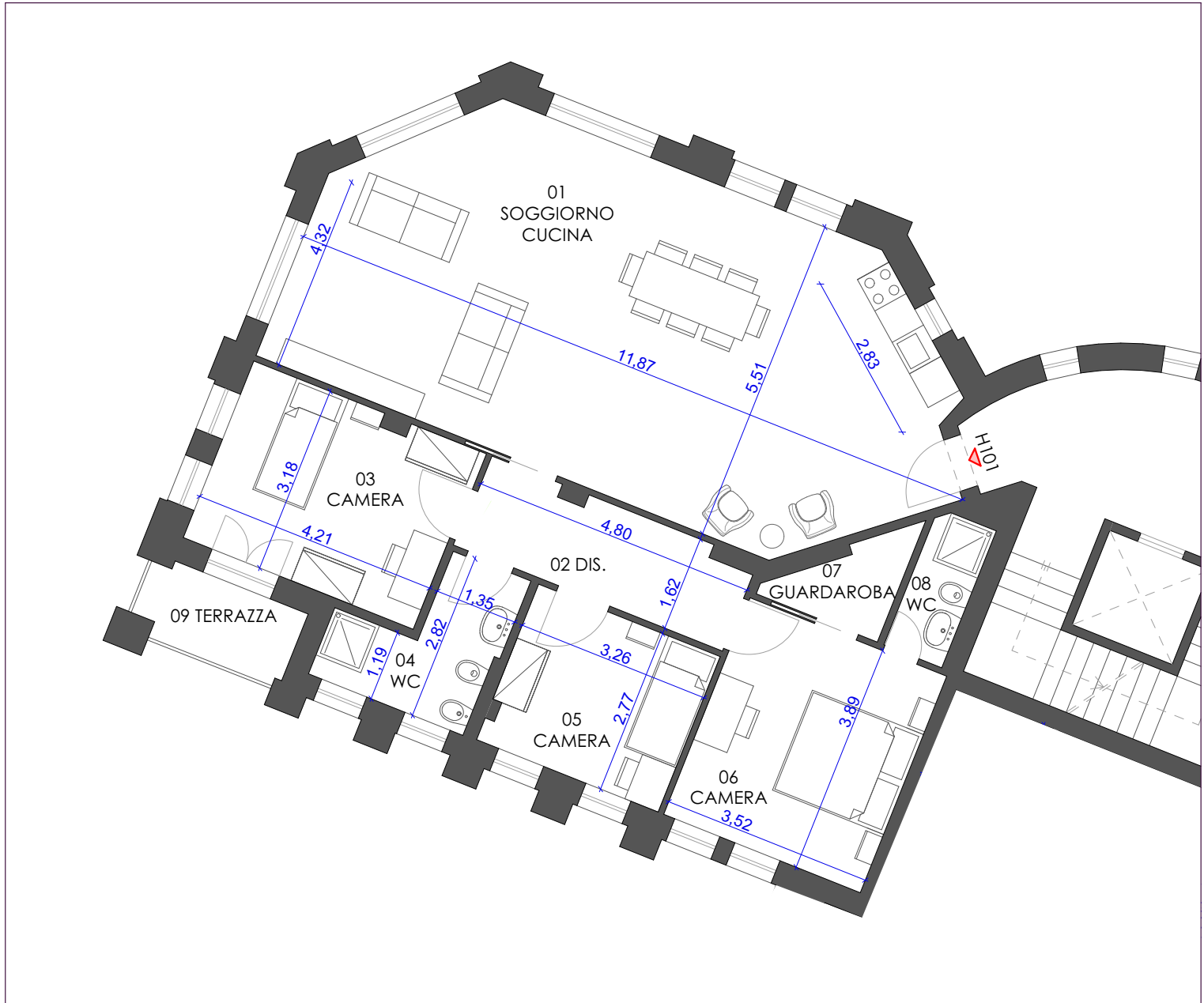
**PIANTA ALLOGGIO - PIANO TERRA**



<b>SUPERFICI LORDE</b>	
SUP. UNITA'	MQ 197,42
2 POSTI AUTO PRIVATI	
SUP. PERTINENZE (Giardini, portici, terrazze, logge)	--
<b>TOTALE</b>	<b>MQ 197,42</b>



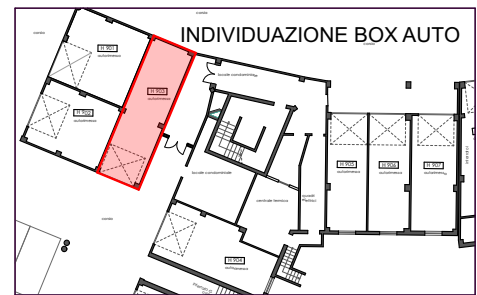
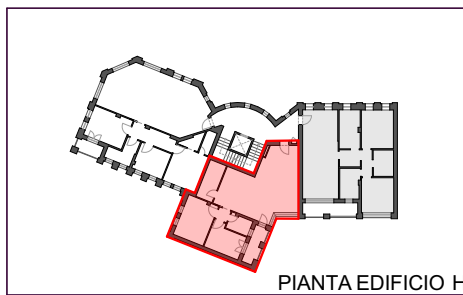
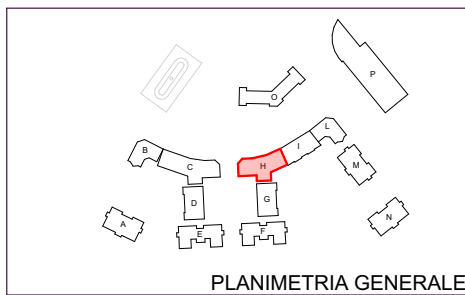
### PIANTA ALLOGGIO - PIANO PRIMO



#### SUPERFICI LORDE

SUP. APPARTAMENTO	MQ 133,81
SUP. BOX AUTO (H902)	MQ 29,56
SUP. PERTINENZE (Giardini, portici, terrazze, logge)	MQ 5,09

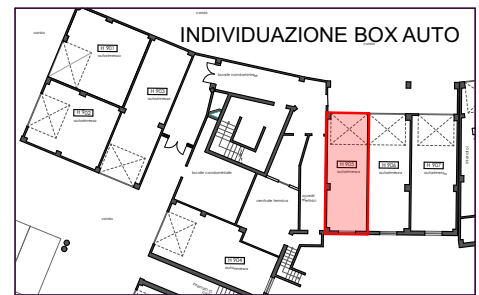
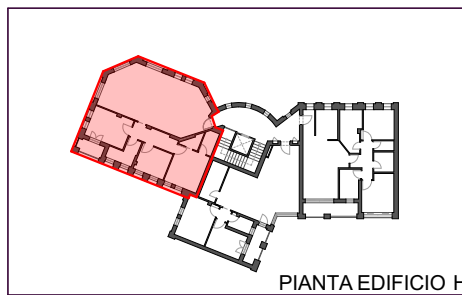
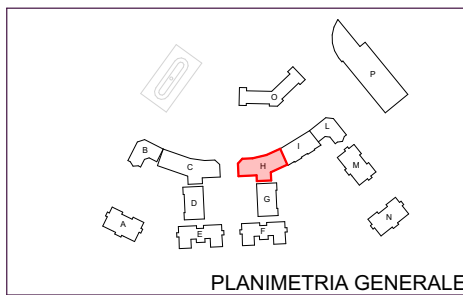
**TOTALE MQ 168,46**



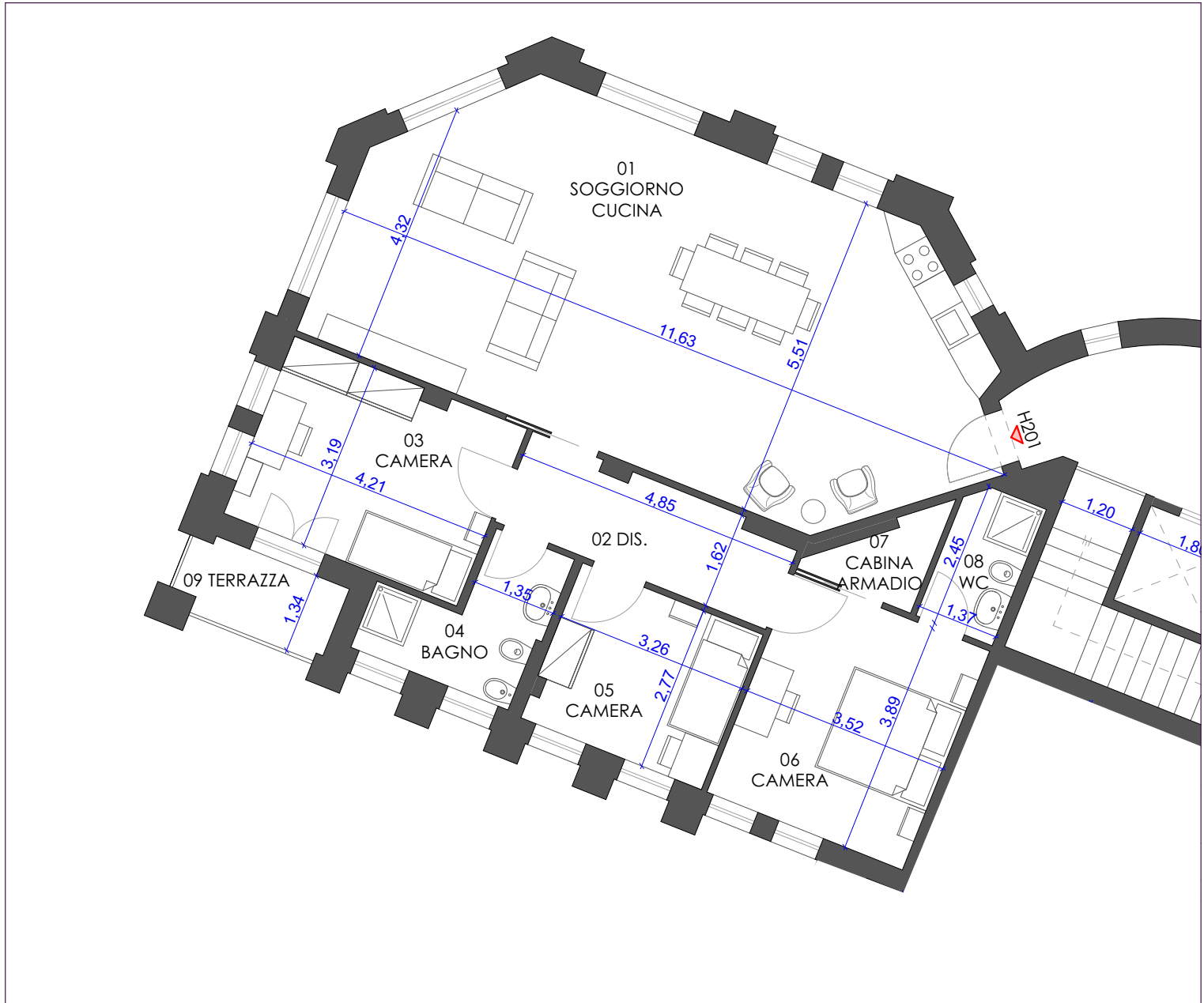
### PIANTA ALLOGGIO - PIANO PRIMO



SUPERFICI LORDE	
SUP. APPARTAMENTO	MQ 96,93
SUP. BOX AUTO (H903)	MQ 35,55
SUP. PERTINENZE (Giardini, portici, terrazze, logge)	MQ 6,65
<b>TOTALE</b>	<b>MQ 139,13</b>



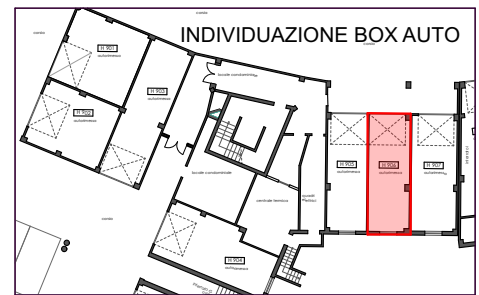
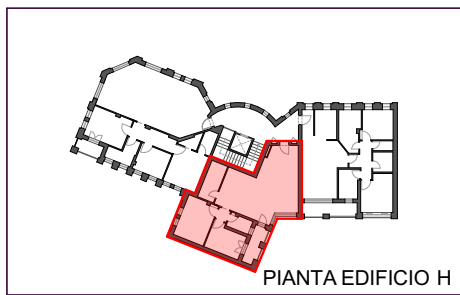
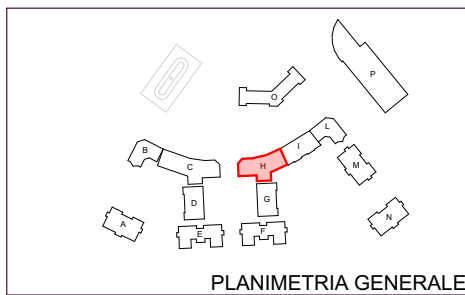
### PIANTA ALLOGGIO - PIANO SECONDO



#### SUPERFICI LORDE

SUP. APPARTAMENTO	MQ 133,81
SUP. BOX AUTO (H905)	MQ 26,36
SUP. PERTINENZE (Giardini, portici, terrazze, logge)	MQ 3,93

**TOTALE MQ 164,10**



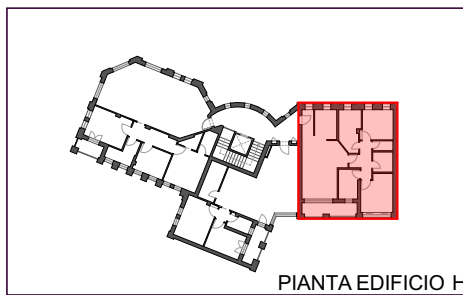
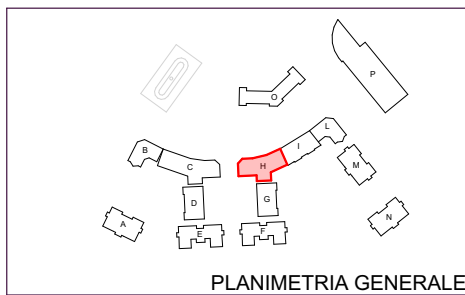
### PIANTA ALLOGGIO - PIANO SECONDO



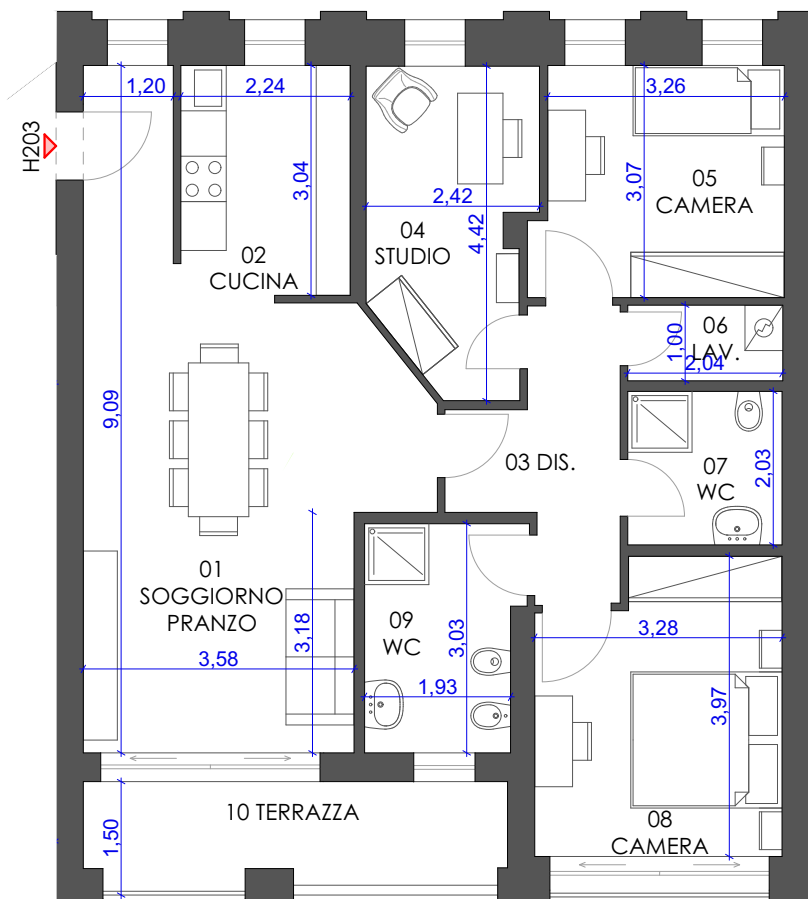
#### SUPERFICI LORDE

SUP. APPARTAMENTO	MQ 96,93
SUP. BOX AUTO (H906)	MQ 27,01
SUP. PERTINENZE (Giardini, portici, terrazze, logge)	MQ 6,55

**TOTALE MQ 130,49**



### PIANTA ALLOGGIO - PIANO TERRA



#### SUPERFICI LORDE

SUP. APPARTAMENTO	MQ 106,39
SUP. BOX AUTO (H907)	MQ 29,50
SUP. PERTINENZE (Giardini, portici, terrazze, logge)	MQ 9,15

**TOTALE MQ 145,04**